



BUDGET EDITION

Island Trees Budget is Responsive to Economic Conditions

Budget Preserves Quality Education for Students

The proposed school budget for 2009-2010 has been developed keeping in mind the difficult economic times we are all experiencing. The restoration of state aid to the 2008-2009 level does not keep pace with the rising costs of goods and services. The Board of Education has worked very hard to find the balance between maintaining excellence in education and making difficult decisions to cut programs and staff. The proposed budget increase is 2.95%, and a tax levy increase of 3.98%.

Our educational, athletic and arts programs have remained largely intact. Funds are included to continue to provide instruction in all academic areas, provide curriculum and staff development opportunities and provide extra-curricular activities. We will continue to provide Academic Intervention Services above the mandated levels with the help of funding through the federal American Recovery and Reinvestment Act. Successful programs such as Model UN, Commerce Plaza and others will continue as well as field trips. Our children will continue to achieve at high levels as evidenced by our most recent School Report Cards.

Due to the difficult economy, the proposed budget does not include funds for the summer YES program. The Board of Education has directed that this program be reviewed over the next year and will consider reinstatement for summer 2010, perhaps with a modified structure. The freshman baseball team and Saturday Academy have also been cut. Staffing cuts were made in all areas: teachers, administration and support staff. Moreover, the budget includes a modicum of funds for new equipment, and supplies have also been held to a minimum.

The Board of Education, administration and staff have worked hard to prepare a budget that maintains excellence in education and is fiscally sound. This has been a difficult year for all school districts. However, the budget will meet the needs of our students and continue to give them opportunities to continue to achieve at high levels. All residents are encouraged to participate in our school budget vote on Tuesday, May 19, 2009.

**Please consider
this proposal
carefully.**

**We look forward to your support and invite you to a
Budget Hearing on Tuesday, May 5, 2009, at
8:00 PM in the Geneva N. Gallow School.
Voting on this proposal will take place on Tuesday,
May 19, 2009, from 12 Noon to 9:00 PM at the
Michael F. Stokes School**

PROPOSED 2009-10 BUDGET

EXPENDITURES

	<u>2008-2009</u> <u>Budget</u>	<u>Proposed</u> <u>2009-2010</u> <u>Budget</u>	<u>+/-</u>
General Support	\$ 5,907,507	\$ 6,116,110	
Instruction	34,697,497	35,611,214	
Pupil Transportation	2,732,778	3,016,939	
Community Services	28,358	4,250	
Undistributed Expenses	11,339,445	11,571,478	
	\$ 54,705,585	\$ 56,319,991	2.95%

REVENUES

	<u>2008-2009</u>	<u>2009-2010</u>	
Fund Balance*	\$ 2,100,000	\$ 2,700,000	
Designated from Employee Liab Reserve	\$ 100,000	\$ 265,000	
Designated from Employee Retirement Res	\$ 400,000	\$ -	
State Aid	15,000,000	14,983,341	
Nassau County Drug Program	28,800	28,800	
Charges for Services	171,000	50,700	
Real Property Rental	613,000	632,973	
Interest Earnings	400,000	275,000	
Other Revenues	160,000	228,000	
	\$ 18,972,800	\$ 19,163,814	

*Fund balance represents the net result of operations for the previous year. It is included as revenue for the following year and serves to reduce the amount to be raised by school taxes.

TAX LEVY

	<u>2008-2009</u>	<u>2009-2010</u>	
Tax Levy	\$ 35,732,785	\$ 37,156,177	3.98%

The Nassau County Board of Assessors, NOT THE SCHOOL DISTRICT, set the school tax rate, therefore school taxes for each individual is impacted by changes in assessed value as determined by the Assessor's office.

3-PART BUDGET COMPARISON

Chapter 436 of the Laws of 1997 now require school districts to divide their annual budget into three components. Therefore, for your review, we have divided our budget into the three components as prescribed by the Uniform System of Accounts for school districts.

	<u>2008-09</u>		<u>2009-10</u>	
Administrative	\$5,050,001	9.23%	\$5,132,005	9.11%
Program	43,250,403	79.06%	44,751,965	79.46%
Capital	6,405,181	11.71%	6,436,021	12.35%
TOTAL	\$54,705,585	100.00%	\$56,319,991	100.00%

2009-2010 BUDGET DETAILS

BOARD OF EDUCATION, CENTRAL ADMINISTRATION, OPERATION AND MAINTENANCE OF PLANT AND GENERAL INSURANCE

These areas represent the costs of the administration and business management of the school system. Included are supplies, equipment, salaries and expenses for related managerial needs. It also comprises costs necessary to repair, preserve and make minor changes to buildings and grounds. Included are expenses for fuel, water, light and power, equipment replacement costs and salaries for custodians, cleaners and maintenance personnel.

GENERAL SUPPORT

CODE	DESCRIPTION	2008-2009	2009-2010	INC. OR (DEC)	%
1010-60	BOARD OF EDUCATION	57,750	54,475	(3,275)	-5.67%
1240	CENTRAL ADMINISTRATION	281,795	285,973	4,178	1.48%
1310-1480	FIN/LEGAL/PERS/PUB INFO	701,021	954,321	253,300	36.13%
1620-21	OPER/MAINT OF PLANT	4,073,326	4,057,046	(16,280)	-0.40%
1670-80	CENTRAL SERVICES	85,696	87,550	1,854	2.16%
1910-81	SPECIAL ITEMS	707,919	676,745	(31,174)	-4.40%
	TOTAL GENERAL SUPPORT	5,907,507	6,116,110	208,603	3.53%

The overall increases result from such rising costs to the district as insurance, telephone, continual repairs to buildings, and equipment is also included in this code.

INSTRUCTIONAL SERVICES

INSTRUCTIONAL SERVICES are the expenses for operating the instructional program. Included are salaries of the principals, supervisors, teachers, counselors, librarians, substitutes, psychologists, tutors, coaches, clerks and aides. Also included are library, health, physical education services, cost of textbooks, library books, supplies, equipment and tuitions for resident pupils attending handicapped and other special classes outside the district. In addition, there are the costs of health and speech services for resident students attending private and parochial schools. The Board of Cooperative Educational Services (BOCES) is the organization which provides shared services in Nassau County such as programs for the handicapped, in-service training and vocational courses which could not be economically provided by a single district.

CODE	DESCRIPTION	2008-2009	2009-2010	INC. OR (DEC)	%
2010-2070	CURR/SUPERVISION	2,306,114	2,213,017	(93,097)	-4.04%
2110	TEACHING REGULAR SCHOOL	19,610,544	20,243,179	632,635	3.23%
2250-80	SPECIAL ED/OCC ED	7,979,097	8,439,921	460,824	5.78%
2331-33	TEACHING SPECIAL SCHS/AD ED	225,061	66,810	(158,251)	-70.31%
2610-30	INSTRUCTIONAL MEDIA	1,522,583	1,442,576	(80,007)	-5.25%
2805-55	PUPIL SERVICES	3,054,098	3,205,711	151,613	4.96%
	TOTAL INSTRUCTIONAL	34,697,497	35,611,214	913,717	2.63%

Island Trees offers a complete education program that includes: All-day Kindergarten, Music and sports programs, and Academic Intervention Services. This code reflects the reduction of 1 administrative position, 1 part-time dean, 2 elementary teaching positions, 7.5 secondary teaching positions and 4 clerical positions. Supplies and equipment have been reduced in almost all areas. Other increases are due to State mandated charges and increases in the district's share of tuition for handicapped students.

TRANSPORTATION

TRANSPORTATION accounts for contracted transportation costs for buses used by public and non-public resident pupils attending district schools, private and parochial schools and schools for special needs. We are required by law to provide transportation to non-public schools for resident students.

CODE	DESCRIPTION	2008-2009	2009-2010	INC. OR (DEC)	%
5510	DISTRICT TRANS SERVICES	135,392	132,548	(2,844)	-2.10%
5540-81	CONTRACT TRANS & OTH EXP	2,597,386	2,884,391	287,005	11.05%
	TOTAL TRANSPORTATION	2,732,778	3,016,939	284,161	10.40%

Increases in this code reflect projected contractors' increased costs.

COMMUNITY SERVICES

CODE	DESCRIPTION	2008-2009	2009-2010	INC. OR (DEC)	%
7140	SATURDAY RECREATION	23,958	-	(23,958)	-100.00%
8070	CENSUS	4,400	4,250	(150)	-3.41%
	TOTAL COMMUNITY SERVICES	28,358	4,250	(24,108)	-85.01%

EMPLOYEE BENEFITS

This category includes employee benefits. Employee benefits are those overhead costs including retirement payments for professional and non-professional employees, Social Security and insurance coverage. These are either uncontrolled charges or negotiated benefits which the district is required to pay. Increases in this code are due to rising costs for employee health care, retirement, Social Security and the addition of unemployment insurance for municipal employees.

CODE	DESCRIPTION	2008-2009	2009-2010	INC. OR (DEC)	%
9010	STATE RETIREMENT - ERS	398,097	367,897	(30,200)	-7.59%
9020	STATE RETIREMENT - TRS	2,047,297	1,867,663	(179,634)	-8.77%
9030	SOCIAL SECURITY	2,336,428	2,476,126	139,698	5.98%
9040	WORKERS' COMPENSATION	173,295	192,704	19,409	11.20%
9050	UNEMPLOYMENT INSURANCE	15,000	257,190	242,190	1614.60%
9060	MEDICAL/DENTAL	4,766,450	4,678,178	(88,272)	-1.85%
	TOTAL EMPLOYEE BENEFITS	9,736,567	9,839,758	103,191	1.06%

DEBT SERVICE

This category includes the cost of District Bond payments (Principal + Interest). The cost of Tax Anticipation Notes (the cost of borrowing money) remains at zero since there will be no need to borrow funds.

CODE	DESCRIPTION	2008-2009	2009-2010	INC. OR (DEC)	%
9710	SERIAL BOND/PRIN & INTEREST	1,502,878	1,666,721	163,843	10.90%
9760	TAX ANTICIPATION NOTES (INT)	-	-	-	-
	TOTAL DEBT SERVICE	1,502,878	1,666,721	163,843	10.90%

INTERFUND TRANSFERS

This category includes a transfer to the Special Aid Fund to cover the district's share of expenses for extended school year programs for Special Education students.

CODE	DESCRIPTION	2008-2009	2009-2010	INC. OR (DEC)	%
9901	TRANSFER TO SPEC AID FUND	40,000	65,000	25,000	62.50%
9950	TRANSFER TO CAPITAL FUND	60,000	-	(60,000)	-100.00%
	TOTAL INTERFUND TRANSFERS	100,000	65,000	(35,000)	-35.00%

WHEN FORMULATING A BUDGET, YOUR BOARD OF EDUCATION HAS NO CONTROL OVER. . . .

- Mandated Employee Retirement or Medical Increases.
- **Changes in Home Assessments** made by *NASSAU COUNTY* causing some homes to receive **HIGHER ASSESSMENTS, RESULTING IN TAX INCREASES.**
- Changes in the Percentage of the **PROPERTY TAXES BEING SHIFTED BETWEEN CLASSES** (Reapportionment) by the *ASSESSOR'S OFFICE* from Utilities (Class 3) and Business (Class 4) to the Class 1 homeowner, resulting in a tax increase.
- The amount of **STATE AID** that is granted to the Island Trees School District.

The only aspect of the budget that a school district CAN CONTROL is the EXPENSE PORTION of the budget!

WHAT HAPPENS IF THE SCHOOL BUDGET IS DEFEATED?

If the Island Trees budget is **NOT PASSED**, the “capped or contingent budget” increase would be \$1,457,640. The Board of Education would have to **REDUCE** the budget by \$156,766. **All new equipment, student supplies, and the Driver Education program would have to be eliminated.**

District Highlights

- ★ **96.5% of our 2008 Grade 5 students** passed the NYS Social Studies Assessment—**68.2%** achieved mastery.
- ★ **95.6% of our 2008 Grade 8 students** passed the NYS Social Studies Assessment—**56.3%** achieved mastery.
- ★ **98.5% of our 2008 Grade 8 students** achieved a level 3 or 4 on the NYS Intermediate Level Science Assessment.
- ★ The Memorial Middle School students had a **100%** passing rate and averaged **93.4%** on the **June 2008 Earth Science Regents**.
- ★ **Grade 6** students at the Memorial Middle School enjoyed a week-long outdoor educational experience at **Greenkill, NY**.
- ★ **Grade 5** students at the Memorial Middle School participated in Commerce Plaza's simulated business experience.
- ★ The Memorial Middle School **Builders Club** organized food drives, collected canned goods, and held a toy drive for the needy during the holiday season.
- ★ **Science enrichment students** at the Memorial Middle School coordinated an e-waste drive and collected over 2,000 pounds of electronic waste that was disposed at the Town of Hempstead recycling plants.
- ★ The High School **Robotics Team** finished in the top third of the L.I. Regional **FIRST** Robotics Competition.
- ★ The High School **Science Olympiad Team** placed in the top 15 out of 62 Long Island teams.
- ★ **93%** of the **Class of 2008** received a Regents Diploma or higher.
- ★ **95%** of the **2008 graduates** went on to attend post-secondary education.
- ★ The **Class of 2008** was offered an impressive **\$3,500,000** in scholarships from various colleges.
- ★ **2 High School students** won the Nassau County Poet Laureate Contest and will be published in *Young Voices*, a poetry anthology.
- ★ **154 Grades 4-11 students** participated in the NYSSMA Solo Festival.
- ★ **24 students** were selected for the Nassau Music Educators All-County Festival.
- ★ **5 students** were selected for the L.I. Strings Festival.
- ★ **2 music students** were selected for **All-State honors**.
- ★ The **Grade 7/8 String Orchestra** received a silver medal at NYSSMA.
- ★ **3 music students** were selected for the All-State Electronic Music Composers Showcase.
- ★ The High School **Chamber Ensemble** and **String Orchestra** received a bronze medal from NYSSMA.
- ★ The **High School Drama Club** performed "*Harvey*" and "*Into the Woods*."
- ★ **21 art students** were selected for the **Art Supervisors All-County Art Exhibition** at Adelphi University.
- ★ **8 high school photography students** participated in the **L.I. Media Arts Show** at Five Towns College.
- ★ **2 art students** were selected for the "Advanced Visions" art exhibition at C.W. Post College.
- ★ **2 art students** were selected for the Art League of L.I. "Go Ape" AP Placement Exhibit.
- ★ **1 high school music student** was named winner of the MENC National Electronic Music Composition Competition.
- ★ **100% of students** who took the French Regents in June 2008 passed the exam—**79%** achieved mastery.
- ★ **98% of students** who took the Spanish Regents in June 2008 passed the exam—**63%** achieved mastery.
- ★ **92% of students** who took the Living Environment Regents in June 2008 passed the exam.
- ★ **88% of students** who took the Physics Regents in June 2008 passed the exam.
- ★ **90% of students** who took the Chemistry Regents in June 2008 passed the exam.
- ★ **86% of students** who took the Earth Science Regents in June 2008 passed the exam.
- ★ **96% of students** who took the Math A Regents in January 2009 passed the exam.
- ★ **98% of students** who took the English Regents in January 2009 passed the exam.
- ★ **97% of students** who took the U.S. History and Govt. Regents and **92% of students** who took the Global Studies Regents in June 2008 passed the exam.
- ★ The I.T. Social Studies Department was awarded **Blue Star Status** by the Financial Literacy Coalition. More than 85% of the 12th grade class scored 85 or better on the Financial Literacy Test for the 5th year in a row.
- ★ **86% of students** who took the AP Psychology, AP U.S. History, and AP World History scored a 3 or better.
- ★ **16 High School students** were named **All-County Athletes** in their respective sports.
- ★ Members of the boys' **baseball team** were **2008 League Champions**.
- ★ Members of the boys' **spring track team** were **2008 Division Champions**.
- ★ Members of the **girls' soccer team** were **Class A Runners Up**.
- ★ Members of the **girls' volleyball team** were **League Champions**.
- ★ **One member** of the boys' **soccer team** was named **Conference III Player of the Year**.
- ★ **Two members** of the **girls' soccer team** were recognized as **All-State players**.
- ★ **One member** of the **girls' basketball team** scored her **1,000th point** as an Island Trees varsity player.
- ★ **One member** of the boys' **wrestling team** was recognized as an **All-State Player**.
- ★ Members of the boys' **bowling team** were **Conference Champions**.
- ★ **One member** of the boys' **bowling team** received the **Scholar Athlete Scholarship Award**.
- ★ **One member** of the **football team** received the **Unsung Hero Scholarship Award**.
- ★ The boys' **soccer, boys' winter track and girls' winter track teams** received the **Sportsmanship Award** from the Nassau County Coaches Association.

Summer Fun at Island Trees!

I.T./SCOPE SUMMER PRESCHOOL PROGRAM

The Summer Preschool Program is designed to offer readiness activities for youngsters who will be entering Island Trees full-day kindergarten in September, 2009. The fourteen-day program will operate every Monday, Tuesday, and Wednesday from Tuesday, June 30, through Wednesday, July 29, 2009. It will only be in session in the morning (9:00 AM to 11:45 AM). The Summer Preschool Program will utilize the air-conditioned preschool rooms at the Geneva N. Gallow School. Information will be distributed to all parents of children in the Island Trees/SCOPE Preschool Program.

SUMMER SPORTS CAMPS

Twenty-two Summer Sports Camps will be offered from June 29 through August 21, 2009, for Island Trees students entering grades 4-12 in September, 2009. There will be a different sports camp every week. Each sports clinic runs for five days and is offered for three (3) hours each day. The cost per sports camp will be \$35.00. Students may sign up for any number of camps. Most of the summer camps will take place in the afternoon allowing many elementary youngsters to attend the Summer Music Program and still participate in several Summer Sports Camp activities.

SECONDARY SUMMER SCHOOL

Summer Driver Education will be offered for eligible Island Trees High School students. The current cost for driver education is \$325. Price may be adjusted. Course runs daily for 6 weeks.

Health, a 1/2 credit course required for graduation, will be offered to grades 6-12 students who wish to accelerate and clear their schedules for the regular school year.

Regents examinations will be offered to students who register in the high school Guidance Office. Registration will take place on June 29 and 30 between the hours of 8 AM and 12 Noon.

These programs all require a registration fee of \$3.00. Further information can be obtained by calling the high school at 520-2136.

SUMMER MUSIC PROGRAM

Students entering grades 4-10 in September will be offered a course of intensive study on the instrument of his/her choice from June 29 through July 24, 2009. A half-hour lesson is followed by a half-hour of supervised practice each day. Students will be offered instruction in both orchestra and band. The program will operate at Island Trees Memorial Middle School. The cost for four weeks will be \$90

ELECTRONIC MUSIC/SYNTHESIZER TECHNOLOGY

Students entering grades 4-12 in September will be offered an Electronic Music/Synthesizer Course from June 29 through July 14, 2009. The students, under the direction of Mr. J. Peter Hansen, will utilize the high school Electronic Music Lab that is equipped with sixteen Korg sequencing workstations in a stereo setup. They will be exposed to the concepts of composing, arranging, mixing, and producing music. The cost for the two-week program will be \$90.00.

SUMMER THEATRE PROGRAM

The Summer Theatre Program is designed to teach students entering grades 6-12 the fundamentals of stage. Students will have an opportunity to develop improvisational and acting skills while expanding their knowledge of voice and choreography. The four-week program will culminate with a musical production incorporating the "Best of Broadway." The program will meet in the renovated and air-conditioned high school auditorium from 9 AM to 12 Noon from Monday, June 29, to Friday, July 24, 2009. It will not be in session on Friday, July 3rd. The cost for the four-week program is \$100.00.



The Island Trees School District, in cooperation with SCOPE, will once again be providing quality programs in a supervised setting in September, 2009.

There is a ratio of one staff member for every ten children. All of the programs require a \$40.00 non-refundable registration fee, \$20.00 for each additional child in same family. If your child is enrolled in both the before and after school child care programs, only one registration fee is required.

Preschool Program

A 3-day program for three-year olds will be in session on Mondays, Tuesday, and Thursdays. The four-year old 4-day program will operate on Mondays through Thursdays. Classes for both programs will run from 9:00 AM to 11:30 AM and 12:30 PM to 3:00 PM. The programs, which begin in September and end in June, cost \$141 a month for the 3-day program and \$189 a month for the 4-day program.

Before School Program

Is in session on all school days for Grades K-6. It begins at 7 AM and operates until the start of school. It is located at the J. Fred Sparke Elementary School in the General Purpose Room. Parents are required to sign their children in each day.

After School Program

Is in session on all full days for Grades K-6. It begins immediately after school and closes at 6 PM.

It is located in the Michael F. Stokes School, General Purpose Room, and the J. Fred Sparke School in the General Purpose Room. Children from the Memorial Middle School (Grades 5 & 6) are bused to Sparke School.

An Open House will be held on Wednesday, May 13, 2009, from 5 PM to 6 PM at both Stokes and Sparke schools.

The immunization requirements for all students are:

- 3 - DPT or DT
- 3 - Oral Polio
- 1 - Measles, Mumps, Rubella
- 3 - Haemophilus influenzae type B (HIB)
- 3 - Hepatitis B
- 1 - Varicella (chicken pox)

PROOF OF LEAD SCREENING

Students who have not met the regulations by the first class **WILL NOT BE ADMITTED TO CLASS.**

If your child is registered and he/she will not be attending, please call **Alice at 631-360-0800 Ext. 133** so we can accommodate someone on our waiting list.

**Registration for all programs is done by mail.
For information, call SCOPE at 631-360-0800.**

ISLAND TREES PUBLIC SCHOOLS

2009-2010 SCHOOL YEAR

July 09						
S	M	T	W	T	F	S
			1	2	3	4
5	6	7	8	9	10	11
12	13	14	15	16	17	18
19	20	21	22	23	24	25
26	27	28	29	30	31	

August 09						
S	M	T	W	T	F	S
						1
2	3	4	5	6	7	8
9	10	11	12	13	14	15
16	17	18	19	20	21	22
23	24	25	26	27	28	29
30	31					

September 09						
S	M	T	W	T	F	S
			1	2	3	4
5	6	7	8	9	10	11
12	13	14	15	16	17	18
19	20	21	22	23	24	25
26	27	28	29	30		

October 09						
S	M	T	W	T	F	S
			1	2	3	4
5	6	7	8	9	10	11
12	13	14	15	16	17	18
19	20	21	22	23	24	25
26	27	28	29	30	31	

November 09						
S	M	T	W	T	F	S
		1	2	3	4	5
6	7	8	9	10	11	12
13	14	15	16	17	18	19
20	21	22	23	24	25	26
27	28	29	30			

December 09						
S	M	T	W	T	F	S
			1	2	3	4
5	6	7	8	9	10	11
12	13	14	15	16	17	18
19	20	21	22	23	24	25
26	27	28	29	30	31	

July

3 Independence Day
Observed

September

7 Labor Day

8 Conference Day

9 First Day of School

28 Yom Kippur

October

12 Columbus Day

November

3 Conference Day

11 Veterans' Day

26 Thanksgiving Recess

27 Thanksgiving Recess

December

24 First Day of Holiday Recess

January

1 Last Day of Holiday Recess

18 Martin Luther King Jr Day

February

15 First Day of Winter Recess

19 Last Day of Winter Recess

March

29 First Day of Spring Recess

April

5 Last Day of Spring Recess

May

28 Snow Day*

31 Memorial Day

June

24 Last Day of School - Regents
Rating Day

27 Graduation

January 10						
S	M	T	W	T	F	S
						1
2	3	4	5	6	7	8
9	10	11	12	13	14	15
16	17	18	19	20	21	22
23	24	25	26	27	28	29
30	31					

February 10						
S	M	T	W	T	F	S
			1	2	3	4
5	6	7	8	9	10	11
12	13	14	15	16	17	18
19	20	21	22	23	24	25
26	27	28	29	30		

March 10						
S	M	T	W	T	F	S
			1	2	3	4
5	6	7	8	9	10	11
12	13	14	15	16	17	18
19	20	21	22	23	24	25
26	27	28	29	30	31	

April 10						
S	M	T	W	T	F	S
				1	2	3
4	5	6	7	8	9	10
11	12	13	14	15	16	17
18	19	20	21	22	23	24
25	26	27	28	29	30	

May 10						
S	M	T	W	T	F	S
						1
2	3	4	5	6	7	8
9	10	11	12	13	14	15
16	17	18	19	20	21	22
23	24	25	26	27	28	29
30	31					

June 10						
S	M	T	W	T	F	S
			1	2	3	4
5	6	7	8	9	10	11
12	13	14	15	16	17	18
19	20	21	22	23	24	25
26	27	28	29	30	31	

This calendar has 180 instructional days & 2 conference days. *School is open only if a snow day occurs previously on a school day. Additional school days may be scheduled if there are multiple snow days. BOE APPROVED 3/25/2009

Stephan Barea Signs National Letter of Intent

On February 6, Stephan Barea took a big step towards his dream of becoming a top Division 1 college soccer player. He signed a National Letter of Intent to attend Hofstra University next year. He will be joining a team that has won three Colonial Athletic Championships in the past five years and attained a national ranking of 13th. Stephan excelled while playing for Island Trees High School. He was a starting player on the Varsity team for four years and has been a captain for the past three years. He was awarded All-County honors by the Nassau County Coaches Association the past two years in addition to being named Player of the Year for 2008 for the conference. Along the way, Stephan was able to break two goal scoring records at Island Trees. He scored 32 goals for his career, and in 2008 scored 14 goals in one season. Island Trees is very proud of Stephan's accomplishments and looks forward to reading about his success in the future.

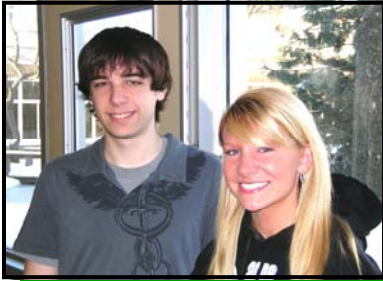


Heading to Historical Philadelphia

On Wednesday, March 25, Mrs. Nieves and Ms. Previdi's classes at Island Trees Memorial Middle School headed out on a trip to Philadelphia, Pennsylvania. After reading about Ben Franklin and Betsy Ross, the students were well prepared for the day ahead. They visited the Liberty Bell, which appears much bigger in person. In Independence Hall, the students were directed into a room containing a painting of the Constitutional congress. Afterwards, they walked to the convention room where the meetings were held to write the Declaration of Independence and the Constitution. The Constitution Museum was the next stop where they viewed the statues of the representatives from the thirteen colonies. At Ben Franklin's court the students saw his printing press and went to the Underground Museum. They walked to Christ Church, which was once the tallest building in North America. It is now known as the oldest church in the country. The students also had an opportunity to tour Betsy Ross's house. The final stop was dinner at the Spaghetti Warehouse. Everyone agreed it was a fun trip and well worth it.



Island Trees High School Students of the Month



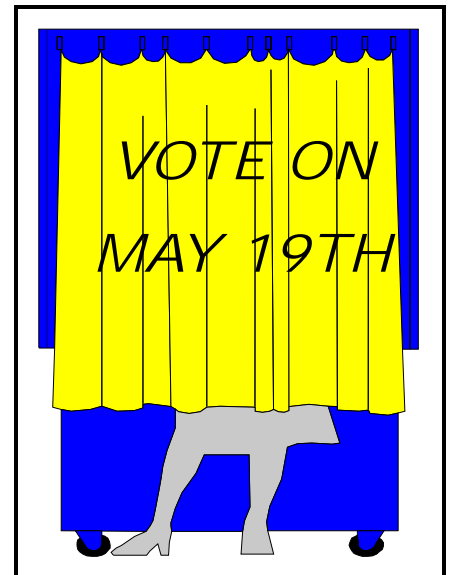
Seniors Matt Murray and Kelly Zino were selected as Students of the Month for March.



Seniors Nick Roa and Christina Medelin were selected as Students of the Month for April.

Esperanza Rising

Mrs. Nieves' and Mrs. Koester's ELA classes at Island Trees Memorial Middle School came together to read *Esperanza Rising*, a novel about a girl who was once rich but became very poor. While reading the book, the classes took part in a variety of activities. For one, summaries of each chapter were recorded to keep track of the story. Also, in the class booklet, the students wrote and answered questions regarding the book. When Esperanza is poor in the novel, her mom made her a yarn doll. The classes had the opportunity to make yarn dolls, too, which was fun. Each student also created a Nickelodeon, which is an old fashioned way to view short films. Everyone brought in a shoe box covered with white paper. Using the summaries, the students drew illustrations to explain the story on long white paper, which was fed through the box. By pulling up on the paper, one had the chance to gain an understanding of the story like people did in the early 1920's. The students were so proud of their work that they invited Mr. Bloom, Principal; Mrs. Potorski, Assistant Principal; and Mrs. Benjamin ELA Chairperson, to view all that they had created.



Authors Visit Island Trees

David Adler, prolific children's author, visited students in grades 2, 3, and 4 at Michael F. Stokes and J. Fred Sparke Elementary Schools. "The first sentence of a book is to get the reader to read the second sentence," he stated. He used humor and personal vignettes throughout the presentation to engage the students. Children hung on to his every word...after all, the author of the "famous" Cam Jensen series was actually speaking to them about how he got the inspiration for his stories, how he created his stories, and how they could create their own. He emphasized that research for his books always begins in the library and encouraged the students to read and write. He explained that there was no wrong way to write a story. His enthusiasm for writing was contagious.

James Bruchac, an Abenaki author, storyteller, cultural educator, animal tracker and wilderness survival expert visited with the sixth graders in the Island Trees Memorial Middle School. He shared his knowledge of animal tracking and brought along several plaster animal track casts from his collection. His telling of interactive animal stories and cautionary monster tales kept the children on the edge of their seats.



David Adler with students and faculty

James Bruchac with students



Nominating Petitions

Nominations of candidates for the office of member of the Board of Education takes place by petition. Petition forms may be obtained from the District Clerk during normal school office hours. Each petition for the nomination of a candidate must be signed by at least 25 qualified district voters or 2% of the number of voters who voted in the previous election, whichever is greater.

Candidates must be residents of the district for at least one year prior to election.

Petitions are due in the District Clerk's office no later than 5 PM on April 20, 2009. Due to the withdrawal of a candidate's petition, the nominating period for that office shall be extended through and including May, 5, 2009, no later than 5 PM.

Budget Hearing

Tuesday, May 5, 2009
8 PM—Geneva N. Gallow School

Voter Registration

Tuesday, May 5, 2009
4 PM to 8 PM
District Clerk's Office, Gallow School

(Open registration on all school days—9 AM to 3 PM in the office of the District Clerk, up to and including Thursday, May 14, 2009)

Only registered voters can participate in the Island Trees UFSD budget vote. Anyone who has voted in one of the last four district elections or general elections is already registered.

A voter must be:

- A U.S. Citizen
- 18 years of age by the day of the election
- A resident of the Island Trees School District for at least 30 days prior to the election

Absentee Ballots

Qualified voters of the Island Trees UFSD who are unable to appear in person on Tuesday, May 19, 2009, may pick up an application for an absentee ballot through the office of the District Clerk, Geneva N. Gallow School, 74 Farmedge Road, Levittown, between the hours of 9 AM and 3 PM any school day. Such application must be received by the District Clerk at least seven days before the election if the ballot is to be returned by mail. Applications may also be picked up through May 18 if the voter intends to hand-deliver the ballot to the District Clerk. **ALL BALLOTS** must be received **no later than 5:00 PM on the day of the election**. The district is not responsible for postal delays, and ballots received after this time cannot be included in the election.

Persons designated "Permanently Disabled" by the Nassau County Board of Elections will automatically receive an absentee ballot.

A copy of the statement of the amount of money which will be required to fund the School District's budget for 2009-2010, exclusive of public monies, may be obtained by a resident of the District during business hours beginning April 28, 2009, except Saturday, Sunday or holidays, at the Administration Office, 74 Farmedge Road, Levittown, NY, and at each of the following schoolhouses:
Island Trees High School, 59 Straight Lane, Levittown, NY
Island Trees Memorial Middle School, 45 Wantagh Avenue S., Levittown, NY
Michael F. Stokes School, 101 Owl Place, Levittown, NY
J. Fred Sparke School, 100 Robin Place, Levittown, NY

Non-Profit Org.
U.S. Postage
PERMIT PAID 180
Island Trees
Public Schools

ISLAND TREES UFSD
Administrative Offices
74 Farmedge Road
Levittown, NY 11756-5202

Board of Education

Peter Ray, President
Carl Bonsignore, Vice President
Joseph Buda
Robert M. Condela
Christine Holt
Patricia Mahon
Kenneth Rochon